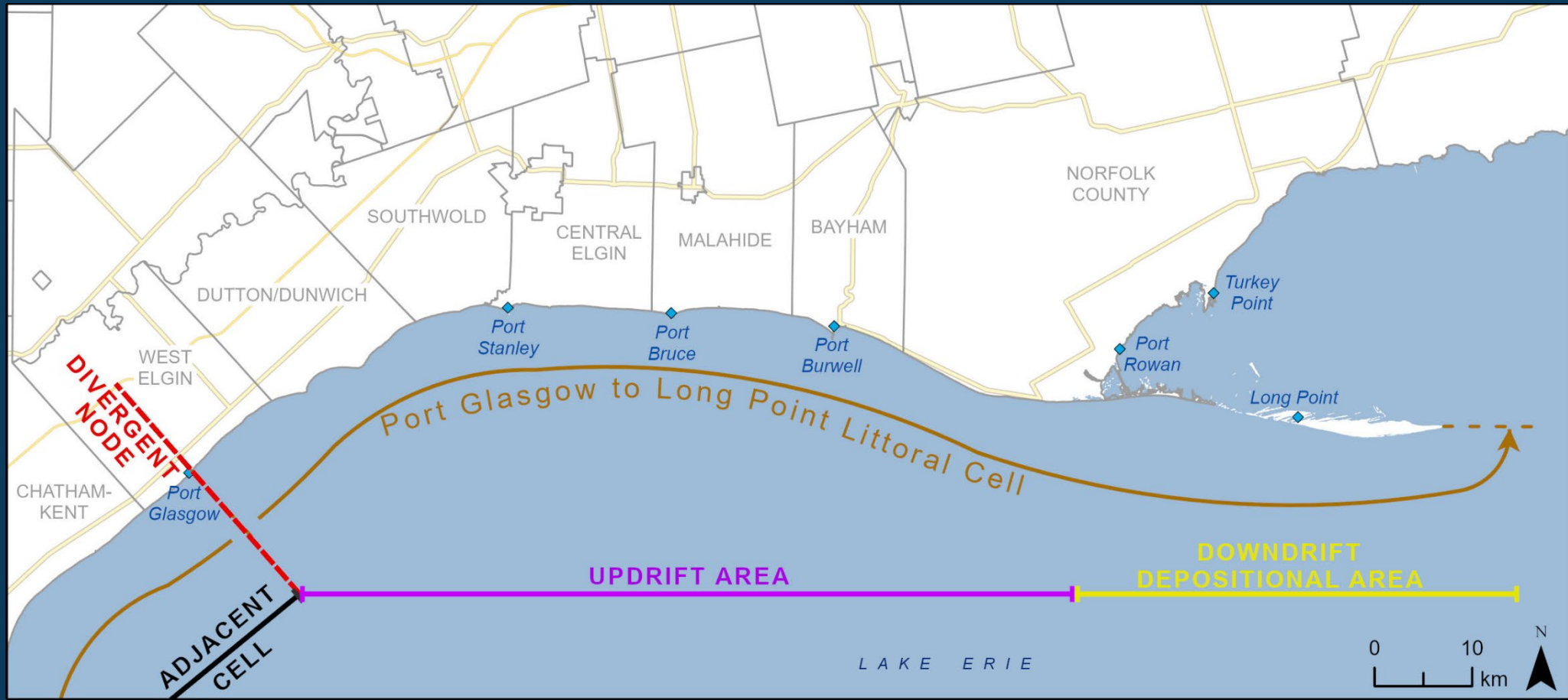


# An Introduction to Lake Erie's North Shore Resilience Project



# Land Acknowledgement

We acknowledge that we are living, working, playing and stewarding on the traditional territory of the Anishinaabe, Haudenosaunee and Neutral peoples.

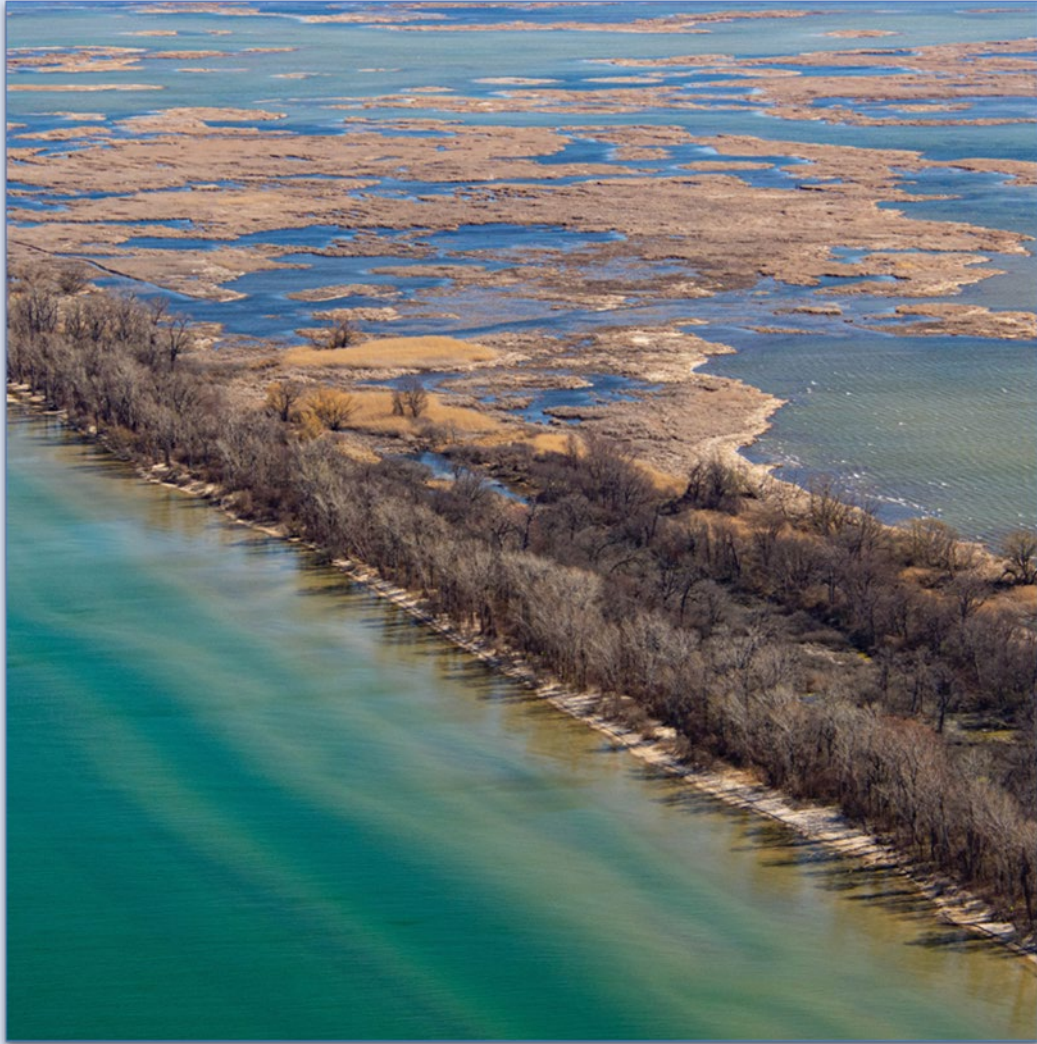
Long before today, there have been First Nations peoples who have been the stewards of this place, meeting in circles such as ours with the focus on living a meaningful, truthful and cooperative life. We recognize and deeply appreciate their contribution in shaping and strengthening this community.

We are committed in a real way to shining a light on the promise and the challenge of Truth and Reconciliation.



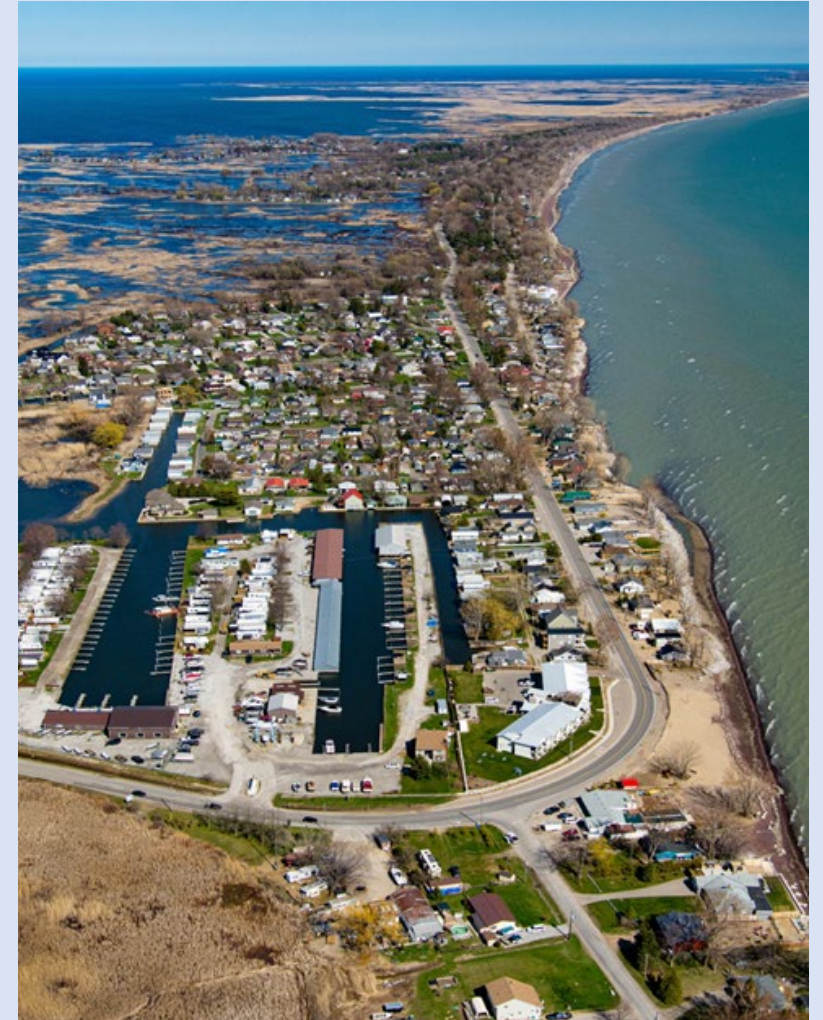
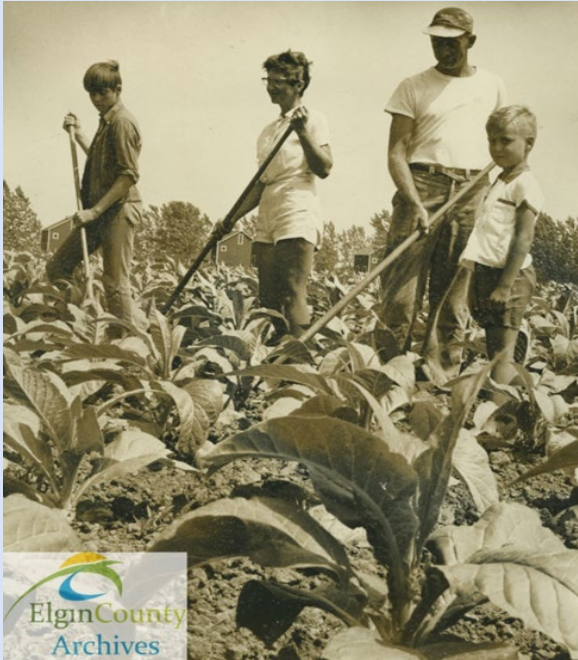


# Coastal Area



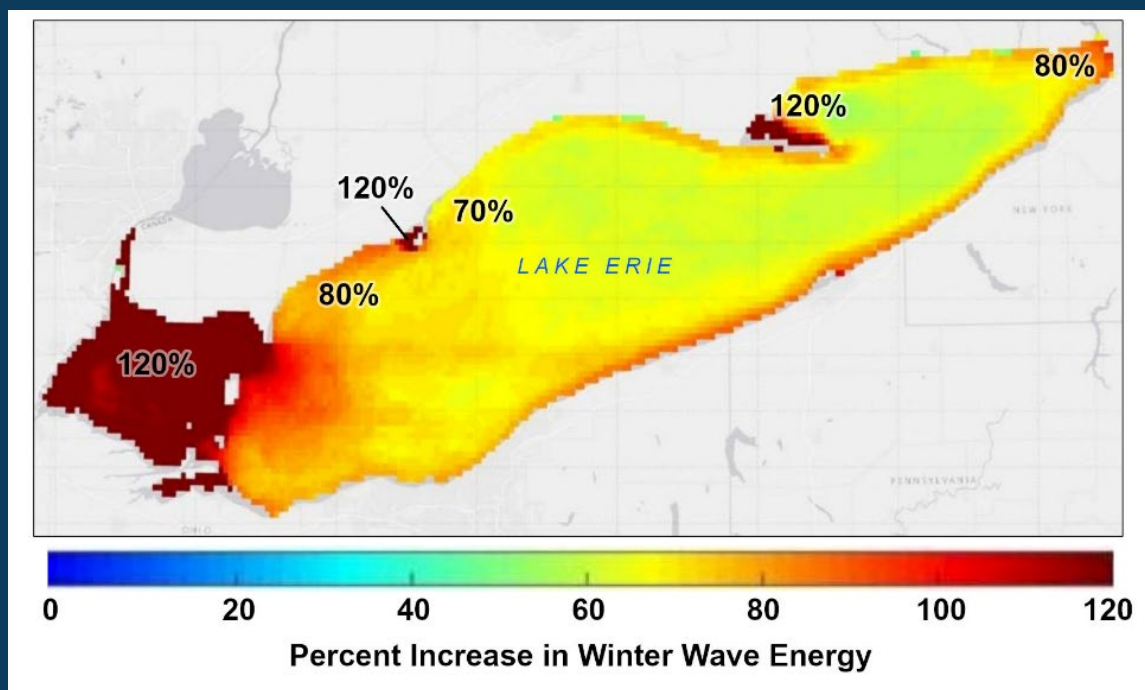


# Land Uses

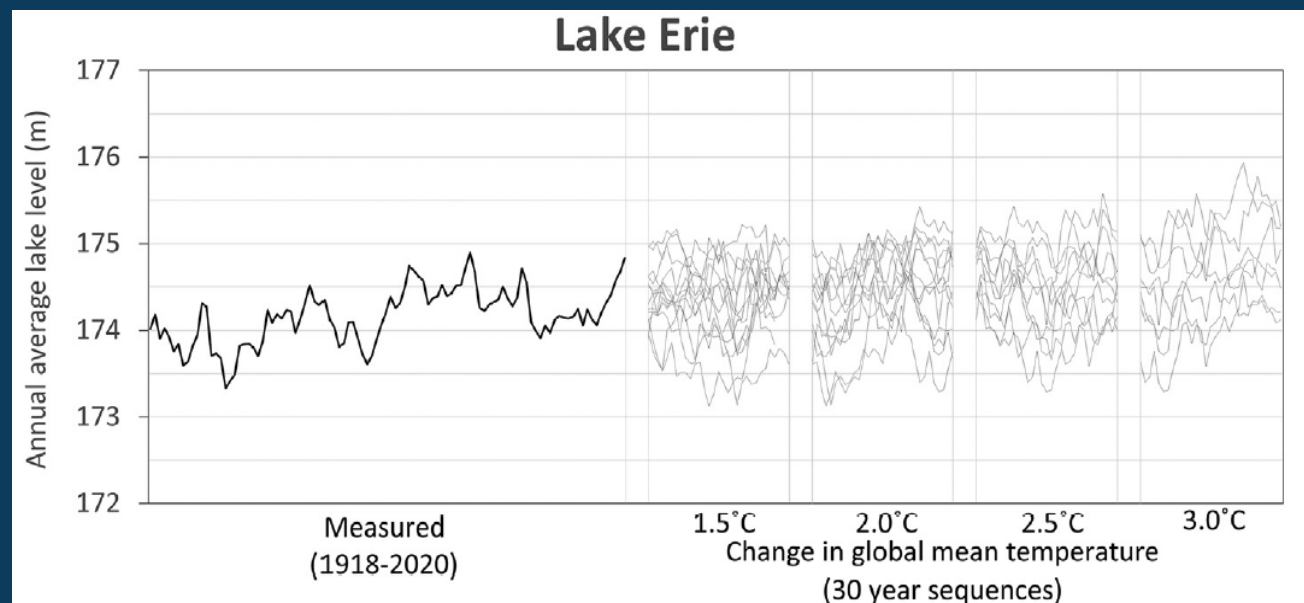


- Farming
- Tourism
- Natural areas
- Urban/rural

# Climate Change: Less Ice, More Winter Storms, & Higher Lake Levels



Recent increases of winter wave energy have been up to 120% in some areas



Projected future lake levels indicate periods of higher lake levels as a warmer atmosphere holds more moisture.



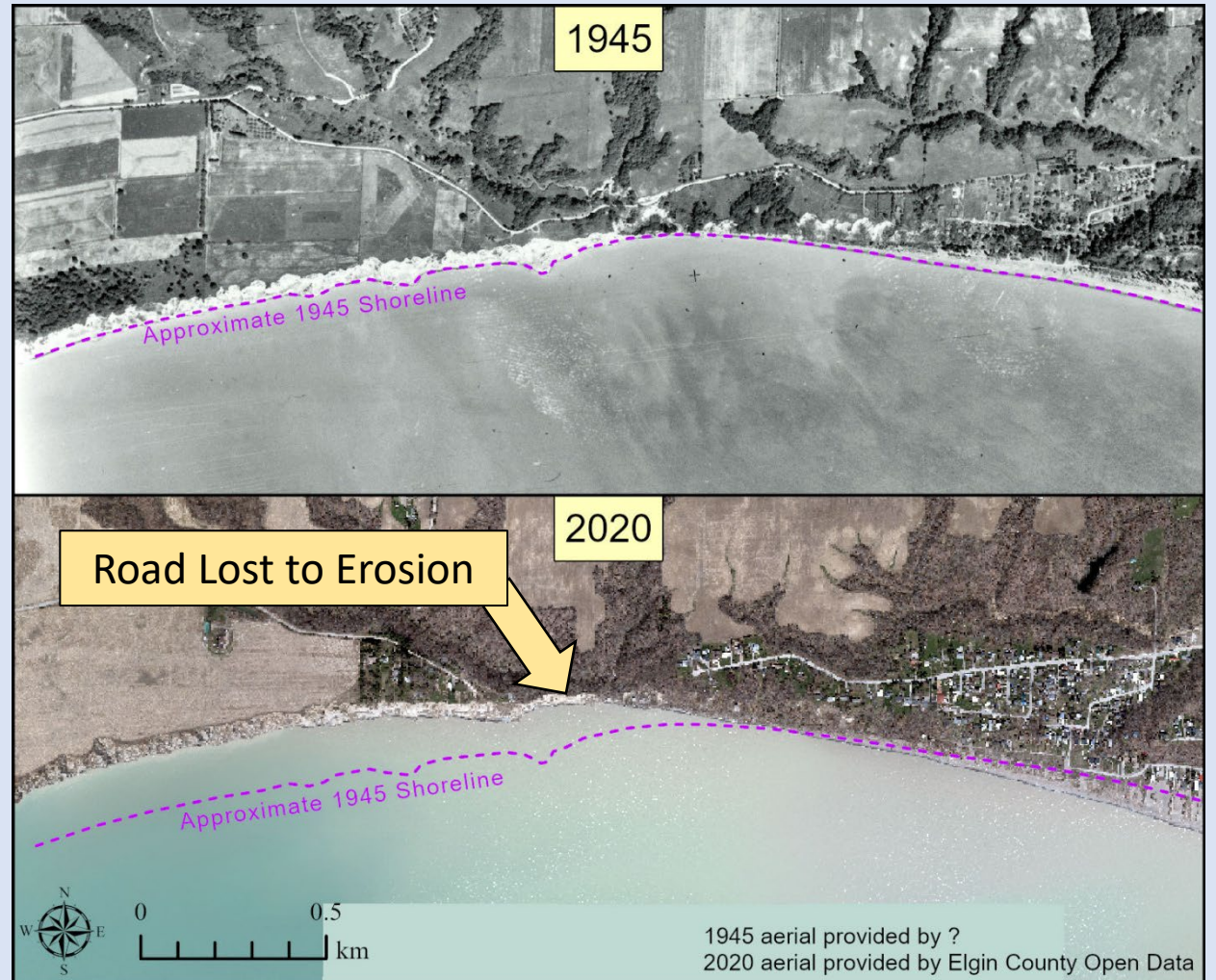
# Flooding Hazards and Risk



**Main Beach in Port Stanley  
(Nov. 15, 2020)**



# Erosion of Grand Canyon Road west of Port Stanley in 1945 and 2020/24





# Beach Erosion and Habitat Loss



**Long Point  
(December 2017)**



**Long Point Provincial Park  
(September 2023)**



# Threats to Private Property

Cottage on Orchard Beach, Port Stanley, 1950 (St. Thomas Times-Journal)



Port Bruce Beach Area, 1970 (St. Thomas Times-Journal)

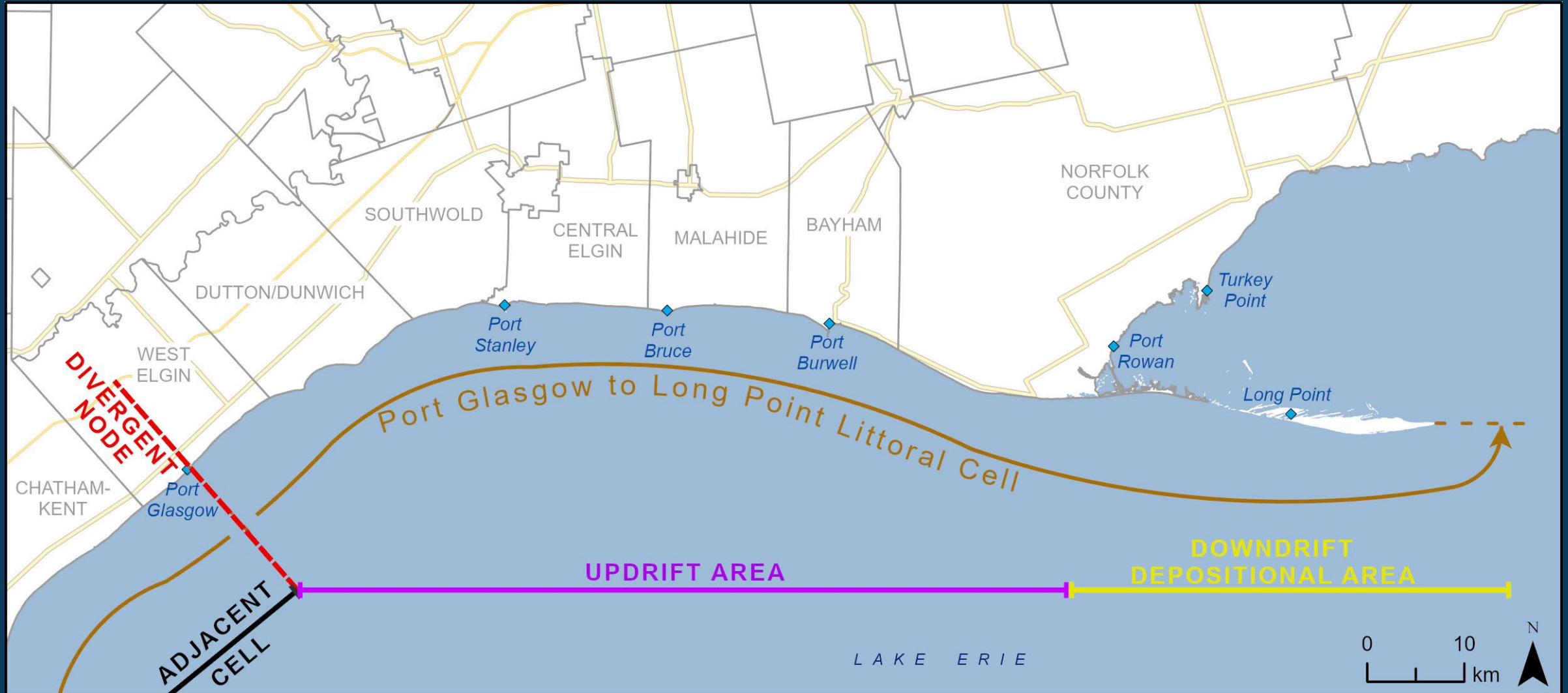


Hastings Drive in Long Point 2021.





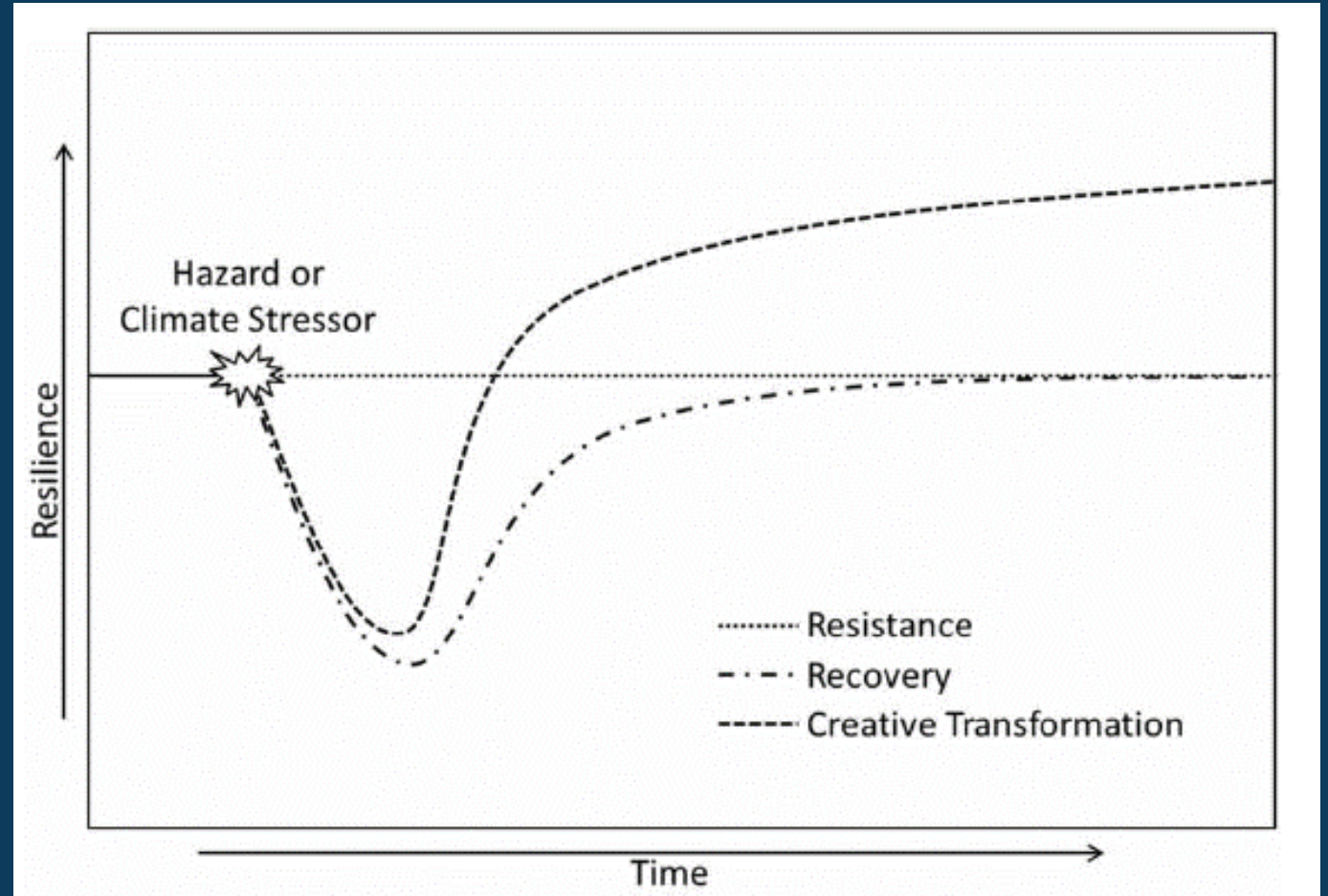
# A Collaborative Regional Approach Is Needed





# Definition of Resilience

- Resilience is the ability of communities and ecosystems to bounce back from damaging stresses such as coastal floods, erosion, heavy rainfall, sedimentation, and extreme high and low water levels





# Project Activities

1. Develop technical and scientific knowledge.
2. Complete dune restoration projects in the study area with nature-based solutions and willing partners.
3. Produce a Resilience Action Plan, informed by technical studies and community feedback.





# A Step-wise Collaborative Approach

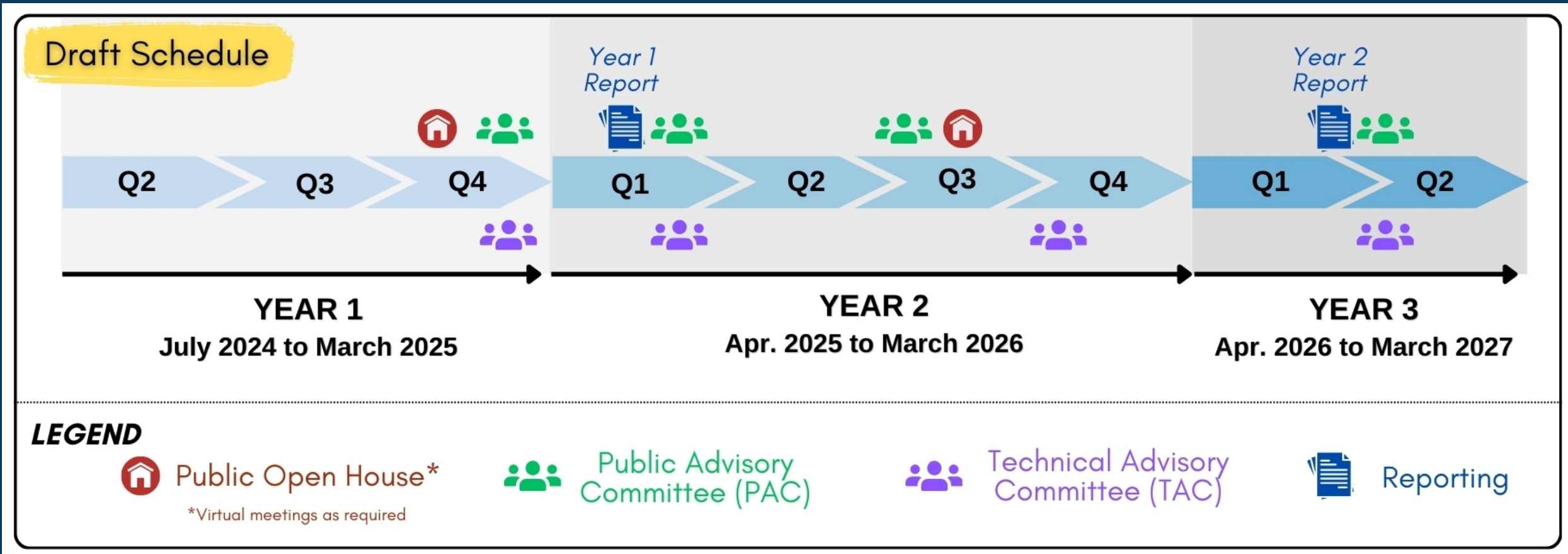




# Project Schedule

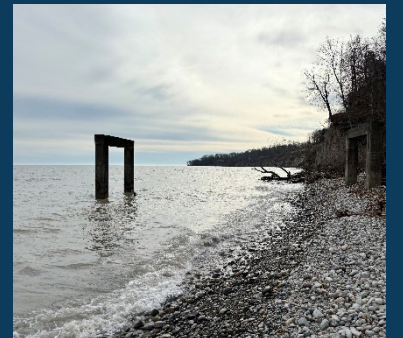
- Overview of activities in Years 1 to 3

[www.northshoreresilience.ca](http://www.northshoreresilience.ca)





# Call to Action



# Please Fill Out the Survey Using the QR Code or Website

- Your feedback is important!
- <https://northshorerelience.ca/engagement/>

